

Web Based Professional Video Management and Storage Software

The FlexWATCH SmartNVR is video management software solution that enables you to simultaneously view, store, and voice, video, and data on the Web browser. SmartNVR can control multi-monitor to provides virtual matrix functionality

SmartNVR can manage video feeds from multiple locations around the world. The result is greater scalability and accessibility – at a lower cost –

Built-in a distributed client-server architecture, SmartNVR offers multiple viewer, player on the multiple connected web client and also interoperated with Alarm, an map application together. When used with FlexWATCH IP Camera , Video Server and NV , SmartNVR delivers broad surveillance functionality to campus environments, airport and seaport perimeters, citywide operations , virtually any environment.

Key features

Web based IP video management software

Quadplex support

(live view, playback, record, backup)

Event, Motion, Scheduled recording & conditional playback

MJPEG, MPEG4, H.264 stream support

Multi vendor's camera and video server support

Comprised of a set of

Smart NVR service

(recording & admin: **Windows Service**)

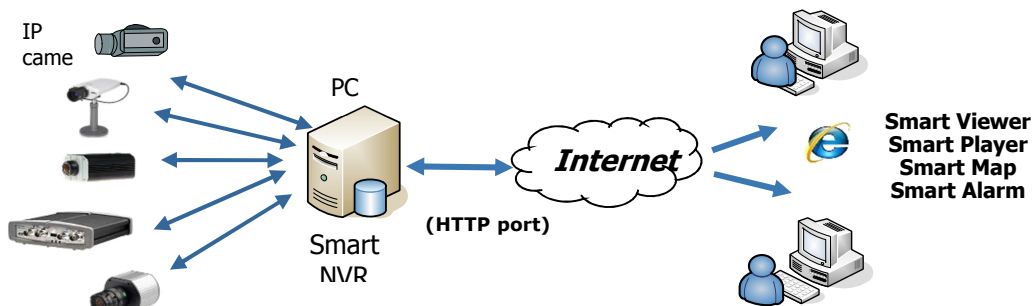
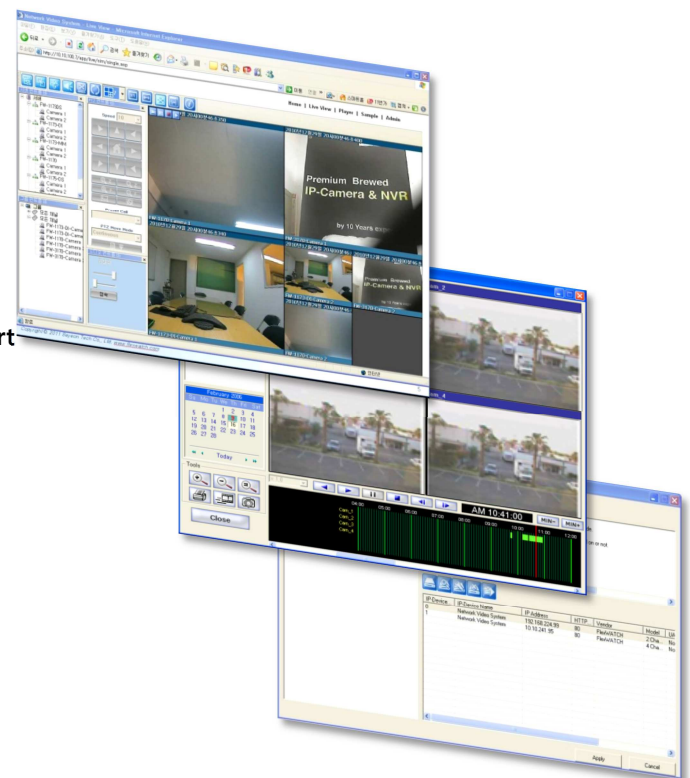
Smart Viewer, Player (ActiveX)

Smart Map, Alarm (Windows App)

Megapixel camera support (up to 3M)

Dynamic User authentication

Up to 128channels support (min: 4ch)



Web Based Professional Video Management and Storage Software

Smart NVR Service

Windows Service for recording & configuration
Browser enabled NVR
Performance depends on PC performance
Product key required (16,32,64ch version)

Main functions of Smart Viewer

Web based App, icon based user interface
Various display group windows
Multi monitor mode
Instant playback at each channel
Forced recording at each channel
Easy drag & drop camera channel
Powerful digital PTZ
Real-time Statistics report
(network bandwidth usage & CPU load)
Multi monitor mode at Smart Viewer
Up to monitor interfaces at PC

Main window of Smart MAP, Smart ALARM

Windows Application Software
Event based Map and Alarm app. for efficient management for distributed IP Cameras

NVR Management configuration

System configuration

- System name, password,
- access control, http port

User configuration

- add, edit, delete
- user-wise privilege for view, playback

Storage configuration max 6.6TB for 1 HDD.

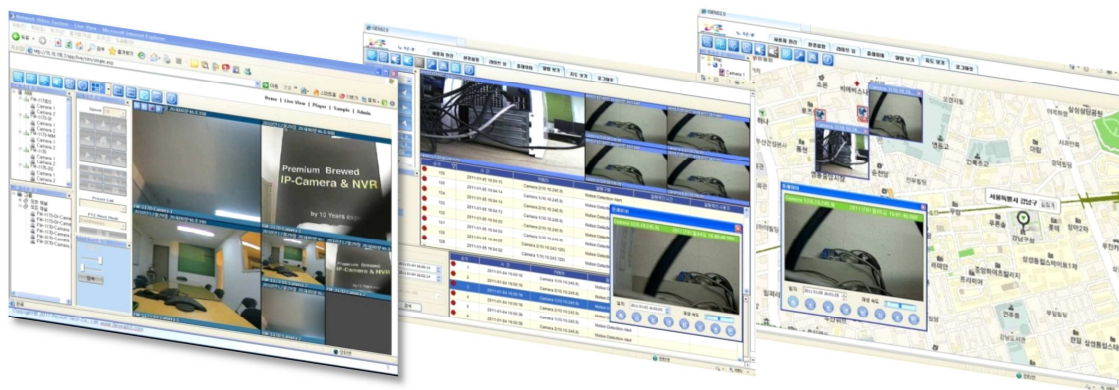
- Max 160TB for 1 smart NVR PC
- Quota, time limitation.
- E-mail reporting

IP-device configuration

- configuration wizard for easy install
- search, auto/manual registration
- Multi Vendor IP camera registration
- Homepage connection for each IP device

Camera Configuration and control

- Camera name, resolution, quality
- PTZ control, Alarm On/Off,
- Event receiving (sensor, motion etc.)



Web Based Professional Video Management and Storage Software

- **Ordering Information**

version	No. channel	Limit	storage	Retransmission stream	Multivendor IP Camera	Max Storage
evaluation	16ch	30 days	16ch	64stream	supported	160TB
Official	16ch	-	16ch	64stream	supported	160TB
	32ch	-	32ch	128stream	supported	160TB
	64ch	-	64ch	256stream	supported	160TB

- **PC Requirement for SmartNVR**

PC requirement as below is highly recommended according to IP Camera's type and resolution and No. channels
OS: Windows XP Pro, Windows 7 Pro or higher, Video Card: 256MB RAM, 1024X768 Resolution or higher

Encoding	Registered ch #	Resolution	CPU	memory
H.264	16ch	D1	Intel Core2Duo T5200	1.0GB
		720P	Intel Core2Duo E7550	1.5GB
		1080P	Intel Core i-5-2500S	2.0GB
	32ch	D1	Intel Core2Duo E6700	1.0GB
		720P	Intel Core i-5 750	2.0GB
		1080P	Intel Core i-7 970	4.0GB
	64ch	D1	Intel Core i-5 661	1.5GB
		720P	Intel Xeon X5660	4.0GB
		1080P	Intel Xeon X5680 Dual CPU	4.0GB
MJPEG	16ch	D1	Intel Core2Duo E6700	1.0GB
		720P	Intel Core i-5 460M	1.5GB
		1080P	Intel Core i-5 -2500	3.0GB
	32ch	D1	Intel Core i-5 661	1.5GB
		720P	Intel Core i-5 -2400S	2.0GB
		1080P	Intel Xeon X5590 Dual CPU	4.0GB
	64ch	D1	Intel Core i-5 -2500	3.0GB
		720P	Intel Xeon X5550 Dual CPU	4.0GB
		1080P	-	-

Notice : Required CPU, memory and performance might be different with recommended according to the image characteristics of real sites.

- **Supported IP Camera**

FlexWATCH, Axis, Panasonic, Mobotix, Arecont Vision, IQinvision, Vivotek, Acti, Avtech, Samsung, Truen, IcanTek, 3S